



# Oracle

## 1Z0-241 Exam

### PeopleSoft Application Developer I: PeopleTools & PeopleCode

Thank you for Downloading 1Z0-241 exam PDF Demo

You can Buy Latest 1Z0-241 Full Version Download

<https://www.certkillers.net/Exam/1Z0-241>

<https://www.certkillers.net>

---

**Question: 1**

---

You write a PeopleCode program that checks whether the user is selecting an existing search key value on the Search page or creating a new search key value. Which system variable do you use?

- A. %Add
- B. &Add
- C. %Mode
- D. &Mode
- E. %Search
- F. &Search

---

**Answer: C**

---

---

**Question: 2**

---

Which three statements are true regarding Query Profile? (Choose three.)

- A. The Query Profiles page enables users to run existing queries and create new ones.
- B. The Query Profiles page enables you to specify the type of access that users have when they work with PeopleSoft Query.
- C. By default, the query profile does not give users access to all PeopleSoft Query features, even if you gave them access to PeopleSoft Query.
- D. If a user has more than one permission list, PeopleSoft Query uses the highest time-out value as defined in the Time-out Minutes section of the user's permission lists.
- E. The Query Profiles page enables you to restrict the types of queries that users can create, limit the number of rows returned, or set the time that a query can run before it times out.
- F. By default, the Only Allowed to Run Queries option on the Query Profiles page is selected, and each permission list that is granted to a user or role has the possibility to have capabilities added.

---

**Answer: B, D, E**

---

---

**Question: 3**

---

Examine this PeopleCode snippet:

```
class OCP_ROWSET extends Rowset;
property integer FilledRowCount get;
method OCP_ROWSET(&strRecName As string, &strDataFld As
string, &strGetOrCreate As string);
method InsertRow(&iRow As integer) Returns boolean;
Select the correct statements. (Choose all that apply.)
```

- A. OCP\_ROWSET is the constructor method for the OCP\_ROWSET class.
- B. Executing the RO\_ROWSET method instantiates an object of the OCP\_ROWSET class.
- C. The OCP\_ROWSET method runs automatically whenever an object is instantiated using the

OCP\_ROWSET class.

D. The OCP\_ROWSET method must initialize the ROWSET class.

E. The OCP\_ROWSET method is added to the ROWSET class, and, by extension, to any instances of the ROWSET class.

---

**Answer: A, C, D**

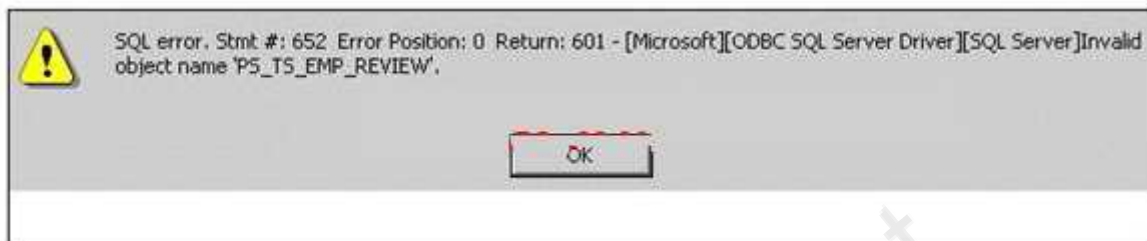
---

---

**Question: 4**

---

View the Exhibit.



You are testing an application that you just completed. You access the content reference and select a search key. When you click the Search button, you see the error shown in the image. Select the next course of action.

- A. Remove the PS\_TS\_EMP\_REVIEW field from the record definition.
- B. Run the Alter process for the PS\_TS\_EMP\_REVIEW record definition.
- C. Run the Build process for the PS\_TS\_EMP\_REVIEW record definition.
- D. Examine the record definition properties and manually create a BUILD script.
- E. Verify that you created and properly configured the PS\_TS\_EMP\_REVIEW page.

---

**Answer: C**

---

---

**Question: 5**

---

Are parameters passed to user-defined internal and external PeopleCode functions by reference or by value?

- A. The first parameter is the input parameter, and the second parameter is output parameter.
- B. User-defined internal and external PeopleCode function parameters are always passed by value.
- C. User-defined internal and external PeopleCode function parameters are always passed by reference.
- D. User-defined internal and external PeopleCode function parameters can be passed as input or as output, depending on the function.
- E. User-defined internal and external PeopleCode function parameters can be passed by reference or by value, depending on the function.

---

**Answer: C**

---

---

**Question: 6**

---

Select the two rules about PeopleSoft prompt table mechanics. (Choose two.)

- A. The prompt matches fields based on name, data type, and length.
- B. The prompt automatically filters the rows based on higher-level key values in the buffer.
- C. The prompt selects the highest-level key on the prompt record definition unless the EFFDT field is present.
- D. The prompt automatically selects for the lowest-level key on the prompt record definition ignoring the EFFDT and EFF\_STATUS fields.

---

**Answer: B, D**

---

---

**Question: 7**

---

Select the two characteristics of summary pages that set them apart from non-summary pages. (Choose two.)

- A. They are display-only.
- B. They contain only level zero.
- C. They typically contain no related fields.
- D. They reference one record definition.

---

**Answer: A, C**

---

---

**Question: 8**

---

Here is a partial list of events in the Component Processor flow.

1. SQL select
2. Search page
3. Record defaults
4. Add row to buffer
5. Standard system field edits
6. Wait for user interaction

What is the correct order?

- A. 1, 2, 3, 4, 5, 6
- B. 2, 1, 4, 3, 6, 5
- C. 6, 2, 1, 4, 3, 5
- D. 2, 1, 3, 4, 5, 6
- E. 2, 4, 5, 1, 3, 6

---

**Answer: B**

---

---

**Question: 9**

---

Select the three primary advantages of using the Message Catalog. (Choose three.)

- A. Messages are reusable.
- B. You can enter messages through a browser.
- C. Developers can secure messages through Definition Security.
- D. Developers can search for and use messages in Application Designer.
- E. Messages in the catalog are easier to translate in globalization situations.

---

**Answer: A, B, E**

---



---

**Question: 10**

---

View the Exhibits.

The image displays two screenshots of a software interface. The top screenshot shows a form titled 'Courses Completed' with a table containing columns for 'Course Code', 'Course Description', 'Course Type', and 'Session'. The rows are numbered 1 through 11. Above the table, there is a 'Student ID' field containing 'NNNNN' and a long alphanumeric string. The bottom screenshot shows a form titled 'Experience' with a table containing columns for 'Skill', 'Description', and 'Proficiency'. The rows are numbered 1 through 5. It also features a 'Student ID' field with 'NNNNN' and a long alphanumeric string.

Examine the two pages and select the correct statement.

- A. You can group these pages in the same component.
- B. You cannot group these pages in the same component.

---

**Answer: A**

---

**Question: 11**

Select the four items that you can use as translate values for the COLOR field. (Choose four.)

- A. BLK
- B. W-02
- C. BRWN
- D. PURPL
- E. BLACK
- F. 1-BL

**Answer: A, B, C, F**

**Question: 12**

View the Exhibit.

<b>1</b>	<pre>If All (PSU_CRS_SESSN.START_DATE, PSU_CRS_SESSN.END_DATE) And     PSU_CRS_SESSN.START_DATE &gt; PSU_CRS_SESSN.END_DATE Then     Error MsgGet(1040, 2 "Message Not Found") End-If;</pre>
<b>2</b>	<pre>If PSU_EMP_RVW_RVR.REVIEWER_ID = 0 Then     COMMENT Reviewer is an employee;     COMMENT Disable REVIEWER_ID;     PSU_EMP_RVW_RVR.REVIEWER_ID.Value =     PSU_EMP_RVW_RVR.EMPLID;     PSU_EMP_RVW_RVR.REVIEWER_ID.Enabled = False; End-If;</pre>
<b>3</b>	<pre>Local Message &amp;request, &amp;response; Local Row &amp;Row; Local Rowset &amp;Rowset;</pre>
<b>4</b>	<pre>Local Field &amp;Crstype;  &amp;Crstype = GetField(PSU_COURSE_TBL.COURSE_TYPE); &amp;Crstype.Value = "H"; &amp;Crstype.Enabled = False;</pre>
<b>5</b>	<pre>&amp;OLD_PRICE &gt; &amp;TOTAL_PRICE; &amp;TOTAL_PRICE = &amp;QTY_ORDERED * &amp;PRICE; &amp;GRAND_TOTAL = &amp;GRAND_TOTAL + &amp;TOTAL_PRICE - &amp;OLD_PRICE;</pre>

Which two PeopleCode snippets contain syntax errors? (Choose two.)

- A. 1
- B. 2
- C. 3
- D. 4
- E. 5

---

**Answer: B, E**

---



---

**Question: 13**

---

View the Exhibit.

You begin to register a component using the registration wizard. Based on the values that appear in the dialog box, select the best course of action.

- A. Continue registering the component as it is.
- B. Stop the registration process to investigate why this component is already registered.
- C. Change the user-facing fields to mixed case and make them less technical and then continue registering the component.

---

**Answer: B**

---



---

**Question: 14**

---

Select the three tasks that you can perform using the Registration Wizard. (Choose three.)

- A. Add pages to existing components.
- B. Add components to existing menus.
- C. Add components to a portal registry.
- D. Add components to a permission list.

E. Create new menus and add components to the new menus.

---

**Answer: B, C, D**

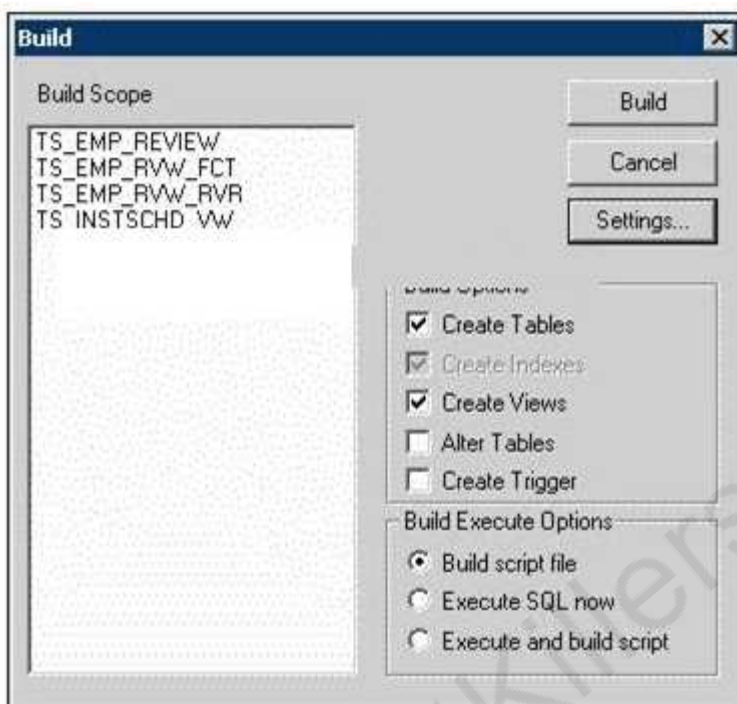
---

---

**Question: 15**

---

View the Exhibit.



Based on this Build dialog box, select the two options that are true. (Choose two.)

- A. When you click the Build button, the TS\_EMP tables are created.
- B. When you click the Build button, nothing happens to your database.
- C. When you click the Build button, the TS\_EMP tables may lose existing data.
- D. When you click the Build button, the TS\_INSTSCHED\_VW view is created.
- E. When you click the Build button, Application Designer generates a script file.

---

**Answer: B, E**

---



## Thank You for trying 1Z0-241 PDF Demo

To Buy Latest 1Z0-241 Full Version Download visit link below

<https://www.certkillers.net/Exam/1Z0-241>

## Start Your 1Z0-241 Preparation

**[Limited Time Offer]** Use Coupon “CKNET” for Further discount on your purchase. Test your 1Z0-241 preparation with actual exam questions.

<https://www.certkillers.net>